

BM-0204

Battery Monitoring Solution

Last longer battery life

Less on-site maintenance



save & safe

installation and maintenance

centralized

management software
& remote monitoring

local services

by local experts

SOLUTION: BM-0204

- Battery monitoring solution for energy back-up batteries. Up to 240 batteries per single system and up to 1,920 batteries using additional server.
- Real-time monitoring for individual cell voltage, ambient temperature and string current.
- Automatic load test and battery health check by internal resistance.
- Suitable for both Data Center and Telco with 48Vdc environment.
- Web-based user interface and web-service API (JSON)

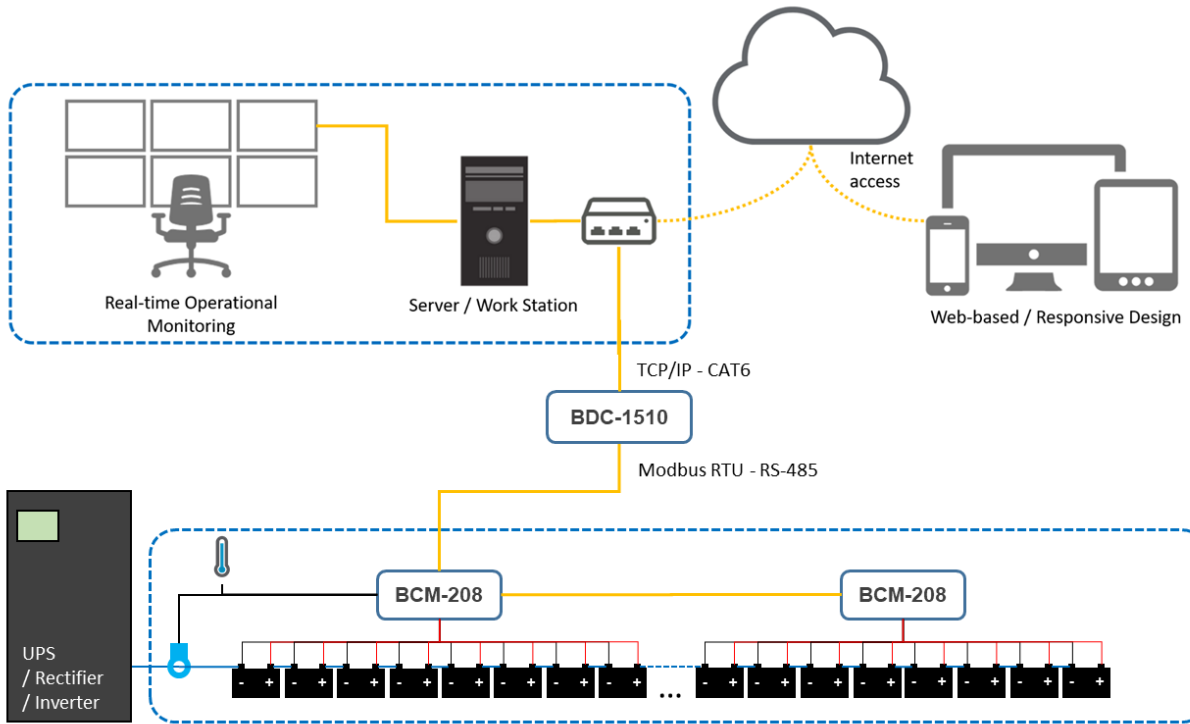


Blue Solar Solution Co., Ltd.

BM-0204

Battery Monitoring Solution

System Overview



Battery Monitoring Module

model: BCM-208



Features

- A BCM-208 is designed for individual battery cell voltage measurement.
- Individually load test to check state of health (SoH) of each battery.
- Float charge current and voltage monitoring.
- No power consumed from monitored battery to avoid fully discharge that can cause the battery damages.

BCM-208 : Specification

Voltage measurement range	2 V - 12 V	Current measurement range	+/- 50 to 1000 A
Voltage accuracy	+/- 0.1 %	Current Accuracy	+/- 1%
Voltage resolution	0.01 V	Current Resolution	0.1 A
No. of Voltage channels	8 Channels	Temp. measurement range	0-80 °C
No. of Current channels	2 Channels	Temperature accuracy	+/- 2%
No. of Temperature channel	1 Channel	Temperature resolution	0.1 °C
Dry Contact Output 12V/1A	1 Channel	Auto. Load Test is available for 7 – 300AH Battery	
Communication RS-485 with Modbus Protocol		Auto. Load Test Schedulable up to 4 time/day	
Communication Response Time	100 ms	Powered from Power Supply	12 – 48 Vdc
Operating temperature	-20 to 80 °C	Power consumption	2 W
Operating humidity non-condensing	10 - 80% RH	Size 10x20x3 cm. Weight 760 g.	

BM-0204

Battery Monitoring Solution

Fanless Embedded system is used to collect data from voltage/temperature/current sensor with RS485 ports and being web server to let client computers to connect and display battery information via web-base UI and JSON API.

Data Collector Unit

model: BDC-1015



BDC-1015 : Specification

Maximum number of connection to BCM-208 : 30 modules 240 Batteries (15 modules/bus)			
No. of RS-485 Port	2 ports	Load Test Scheduling Configurable	
No. of Ethernet Port	1 port	Internal Resistance Data Logger	
Web-service Interface	JSON	Solid State Current Load	
Web-based User Interface	HTML5	SD Card Memory	4 GB
Dry Contact Output 12V/1A	2 Channels	OLED Display	
Auxiliary Analog Input	2 Channels	Powered from Power Supply	12 – 48 Vdc
Operating temperature	-20 to 80 °C	Power consumption	2 W
Operating humidity non-condensing	10 - 80% RH	Size 10x20x3 cm. Weight 500 g.	

String Current & Temp Module

model: C8-200

A C8-200 is a module used to measure the string current and ambient temperature with hall effect current sensor and temperature probe.



C8-200 : Specification

Current Sensor			
Current measurement range	+/- 50 to 1000 A	Offset Voltage	20mV
Current Accuracy	+/- 1%	Hysteresis Error	±10mV
Linearity	1%	Overload Capacity	20 times
Insulation Voltage	3000 Vdc	Response Time	10uS
Operating Temperature	-10°C ~ +80°C	Thermal Drift	500 ppm/°C
Unit Weight	90 g	Power Consumption	0.25 W
Temperature Sensor			
Temperature measurement range	0-80 °C		

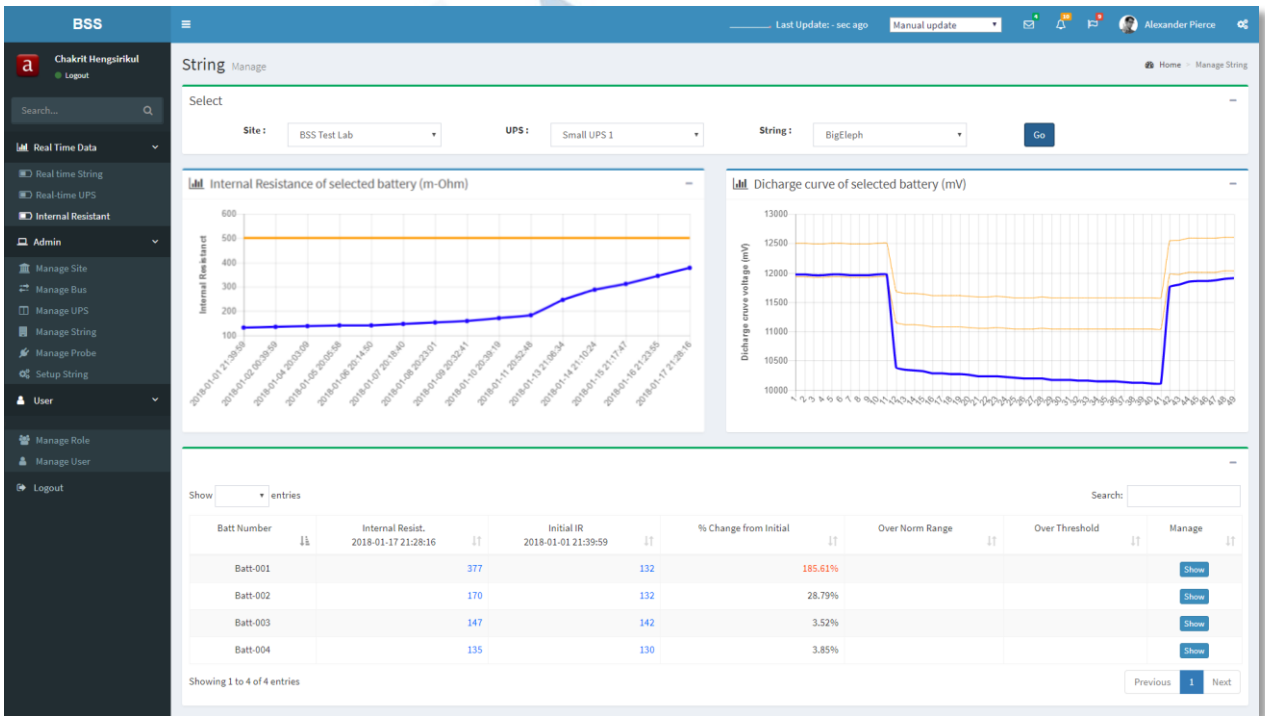
BM-0204

Battery Monitoring Solution

Software Interface

PC Version

Battery Monitoring Software installed in an industrial PC to manage load test schedule, record data and analyze state of health of individual battery using internal resistance information.



Software Features and Functions

Structure Configuration

- ✓ Multi-Site Management
- ✓ Multi-UPS per Site
- ✓ Multi-String per UPS
- ✓ Battery Types and Condition

Real-time Monitoring

- ✓ Charge/Discharge Status
- ✓ Individual Battery Voltage
- ✓ String Total Voltage
- ✓ String Current
- ✓ Ambient Temperature

Overall Level Alert

- ✓ Power Outage / Discharge Event
- ✓ Abnormal Ambient Temperature
- ✓ Over Charge/Discharge Current

Individual Battery Alert

- ✓ Over Charging Voltage
- ✓ Deep Discharging Voltage
- ✓ Internal Resistance exceeding threshold
- ✓ %Change of Internal Resistance from Initial State

Discharge Curve Analysis

- ✓ Discharge curve comparable to the other batteries
- ✓ Internal Resistance Trending comparing to threshold

Scheduled Automatic Load Test

- ✓ Monthly/Daily Schedule
- ✓ Specific day of month
- ✓ Specific hour of day



BM-0204

Battery Monitoring Solution

Software Interface

Software Features (Cont.)

The screenshot displays the BSS software interface for battery monitoring. At the top, it shows the user 'Alexander Pierce' and system status like 'Last Update: 5 sec ago'. The main area is titled 'String Manage' and includes filters for 'Site' (New Test Site) and 'UPS' (Test UPS 23 in Site 48). Three panels show detailed data for different battery strings:

- String: Test String 36 in bus 5**
Total Volt: 144.428 Volt
Current: -0.070 Amp
Temperature: 19.20 C
Minimum Battery Voltage: 11.440 Volt
- String: Test String 37 in bus 5**
Total Volt: 145.448 Volt
Current: -0.430 Amp
Temperature: 39.80 C
Minimum Battery Voltage: 11.400 Volt
- String: String 16 Batt**
Total Volt: 198.042 Volt
Current: -0.140 Amp
Temperature: 38.50 C
Minimum Battery Voltage: 11.207 Volt

Below each panel is a table of battery data. Each table has columns for 'Batt Number', 'Voltage (V.)', and 'Internal Resist (mOHM)'. The data is paginated, showing 1 to 12 or 16 entries.

Monitoring Cloud Services

We also provide cloud solution for Battery Monitoring Services.

Why cloud?

- ✓ Customers can monitor anywhere anytime over the internet.
- ✓ Multiple locations support.
- ✓ Maintenance-free software.
- ✓ Save initial cost on infrastructure.
- ✓ Free new features update.



BM-0204

Battery Monitoring
Solution

Services

Local Services by Local Experts



In Thailand, we provide local services and supports by local experts. with in 4 hours for Bangkok and next business day for up-country

Design and Installation

We provide on-site survey, solution design, hardware and software installation services and also product commissioning.



Demonstration and Training



We provide pre booking product demonstration and training. We also provide 1 day installation training for free of charge.



Blue Solar Solution Co., Ltd.
117/63 Phatthana Chonnabot 4 Rd.,
Klongsonthonun, Lat Krabang,
Bangkok , Thailand 10520

Contact
Mobile: +668-9122-0653
+668-1655-1868
info@bluesolarsolution.com
www.bluesolarsolution.com